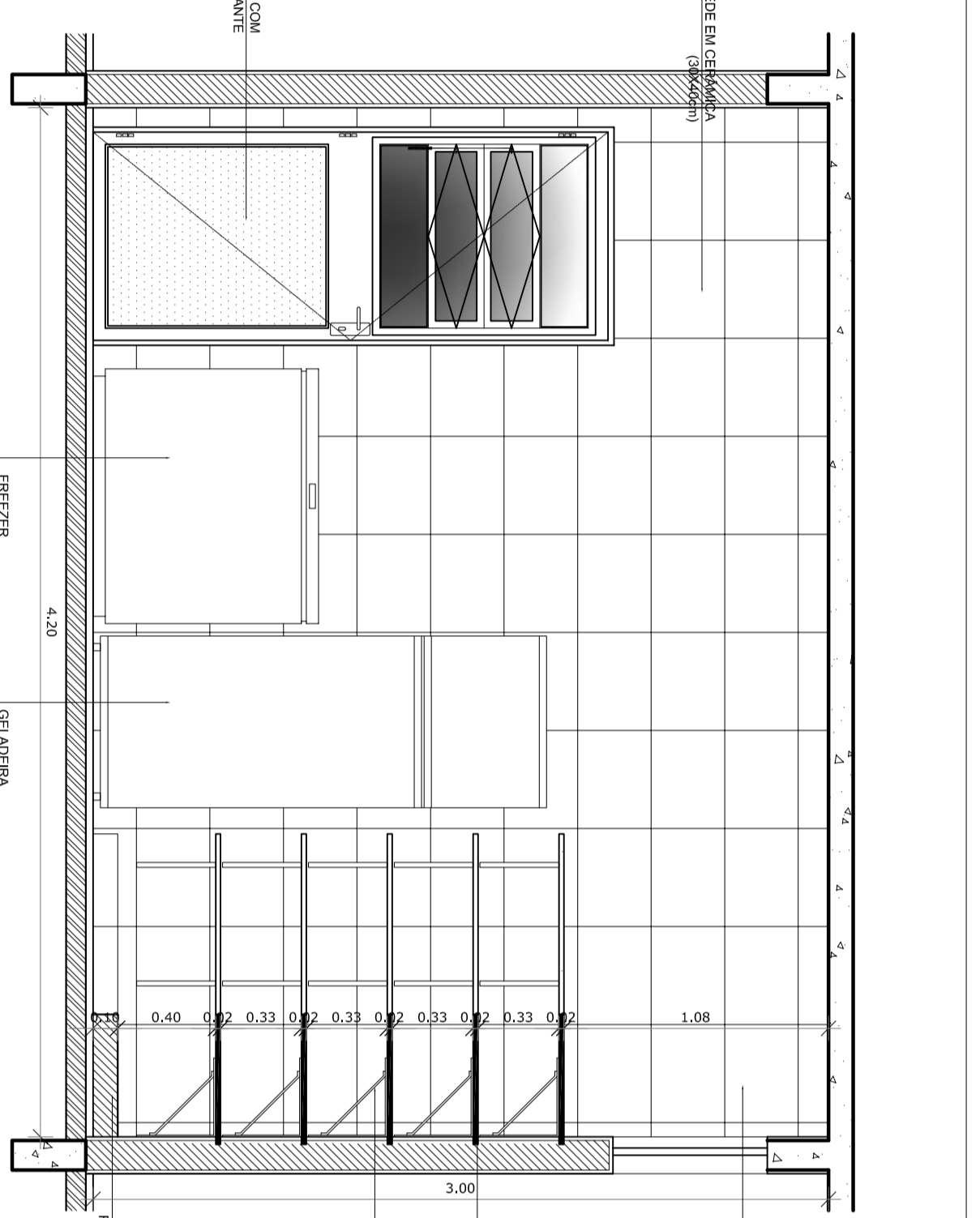
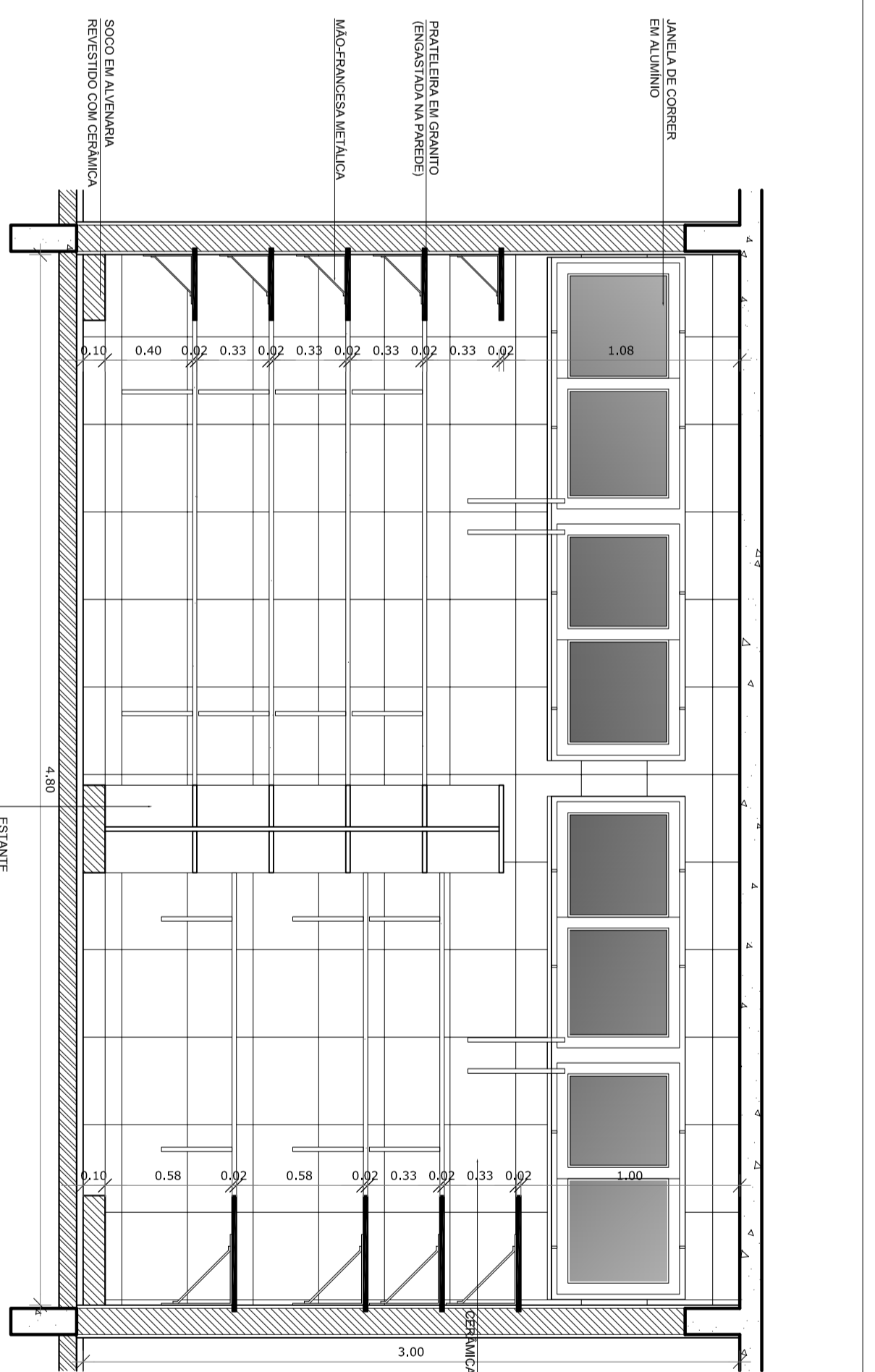


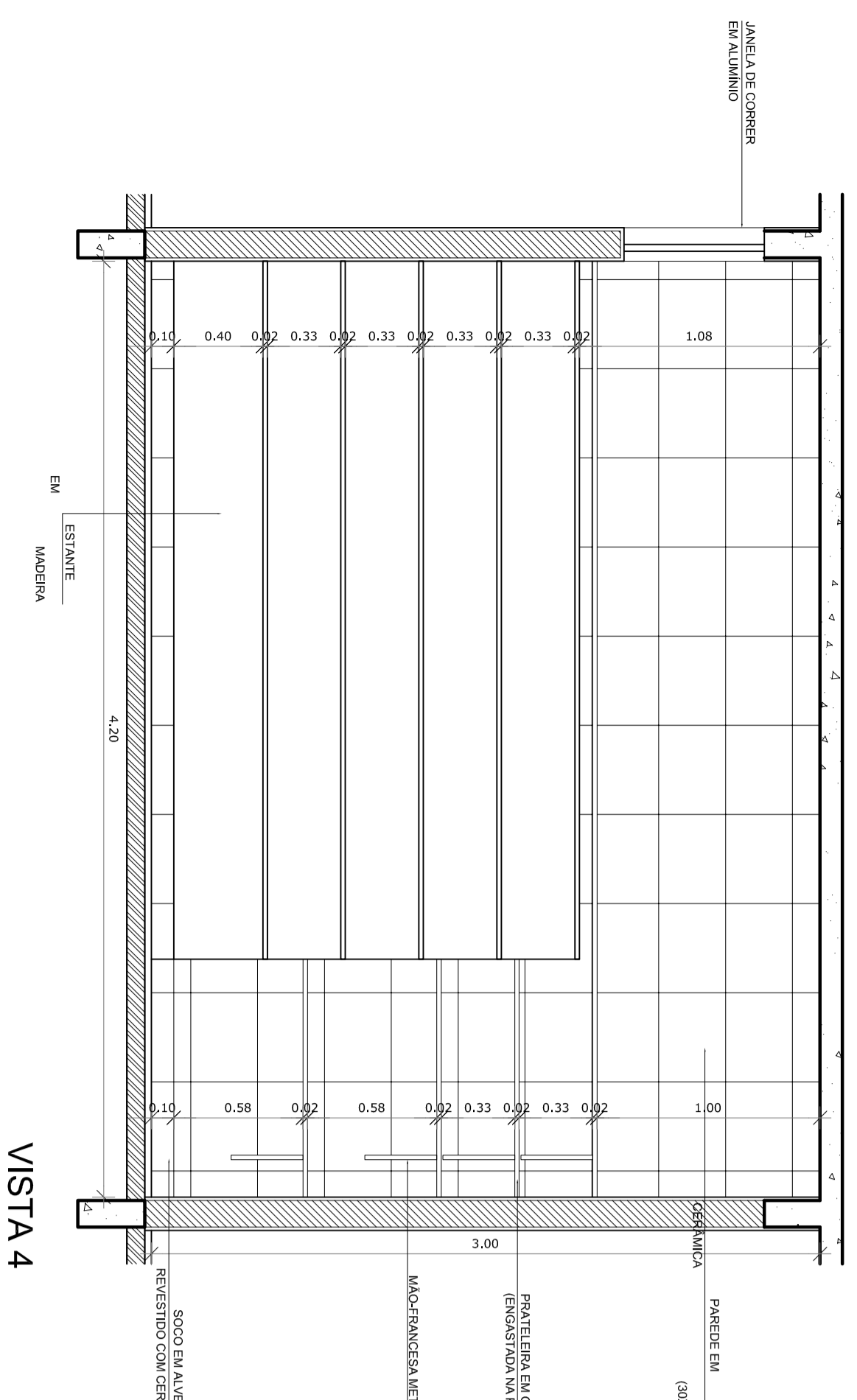
VISTA 1



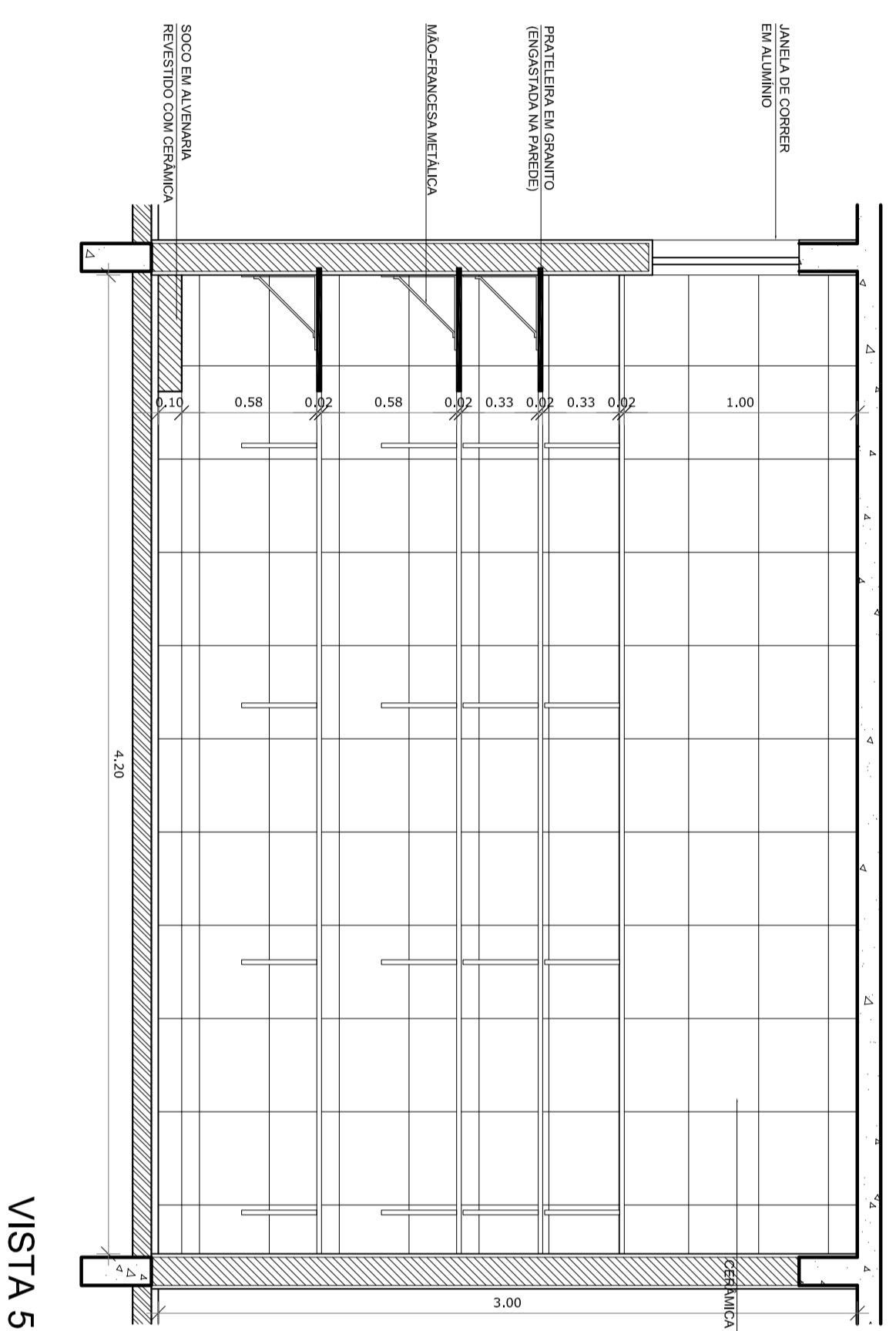
VISTA 2



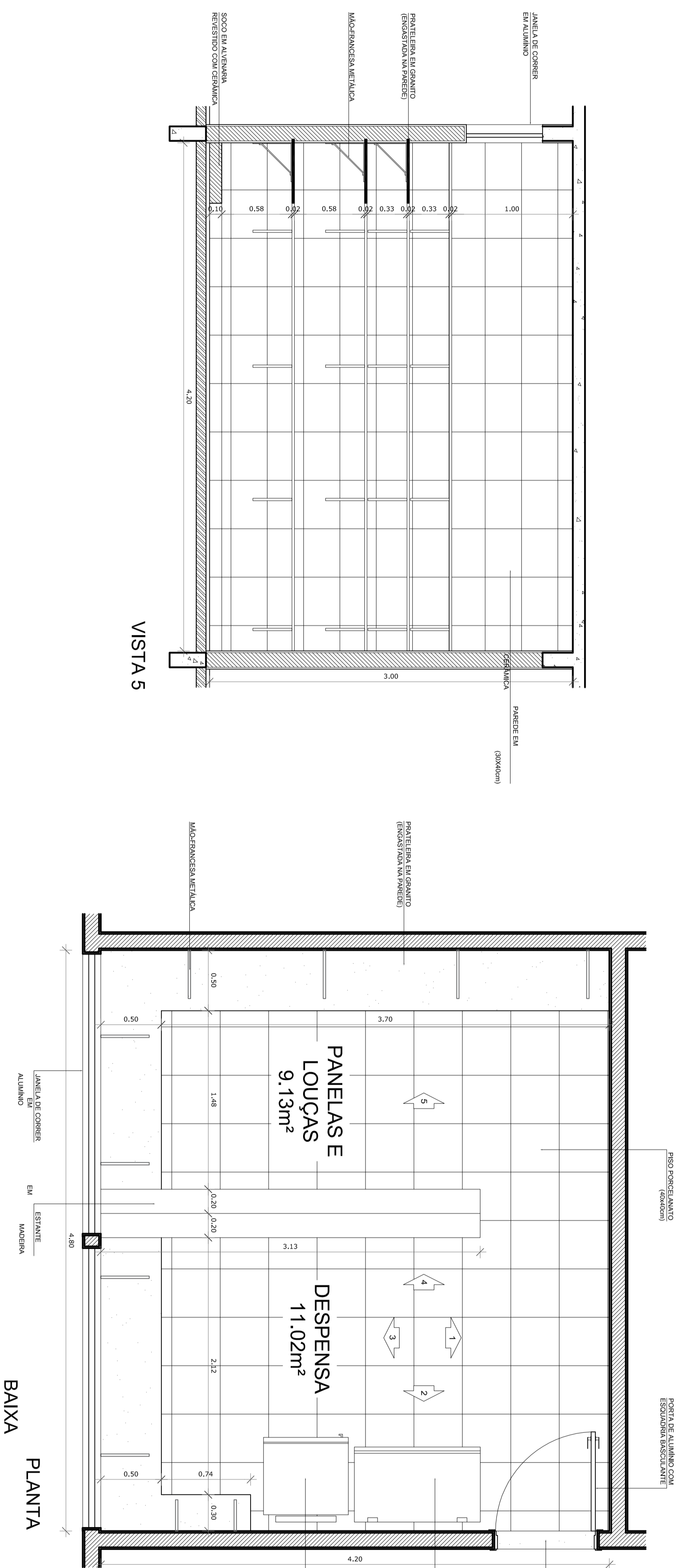
VISTA 3



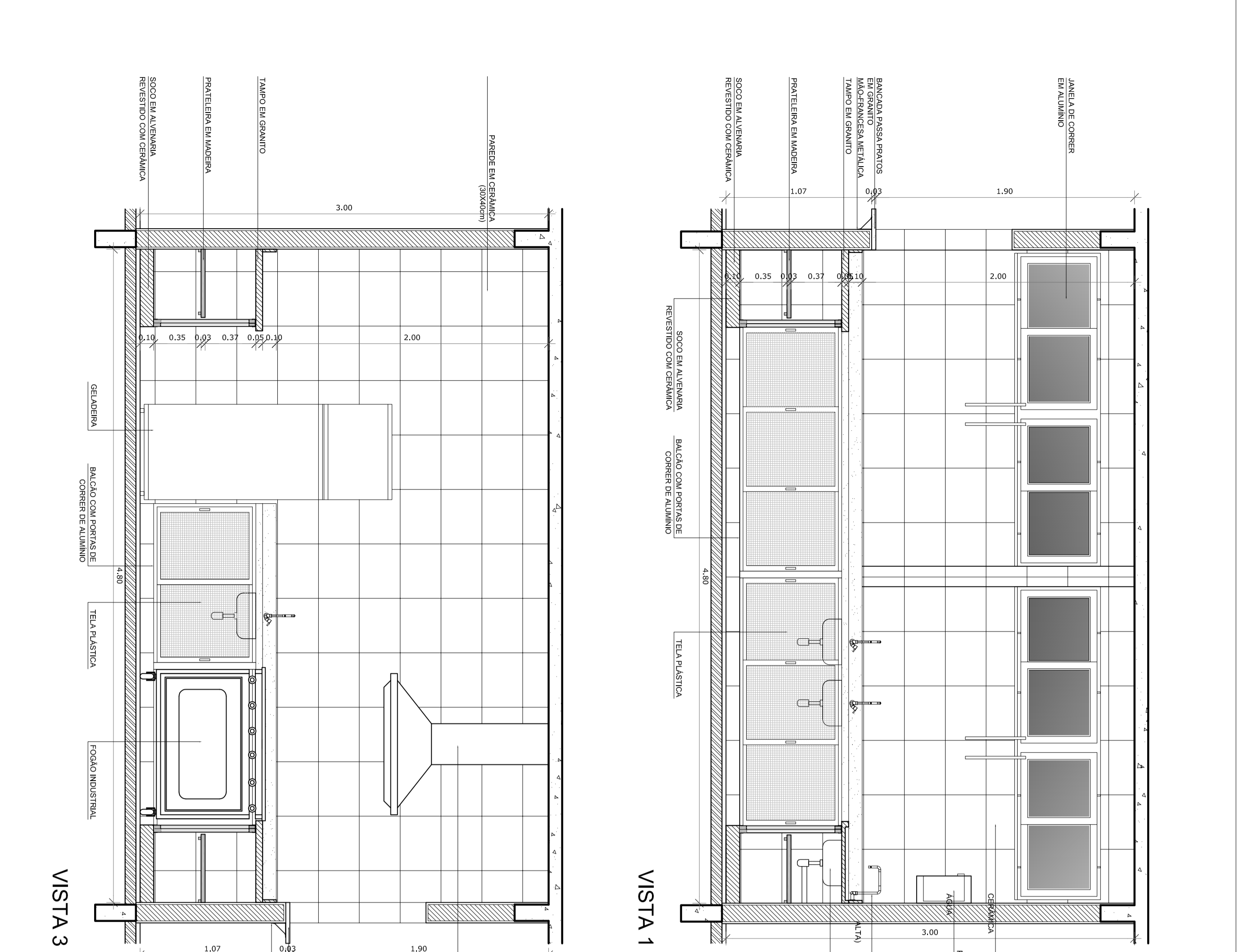
VISTA 4



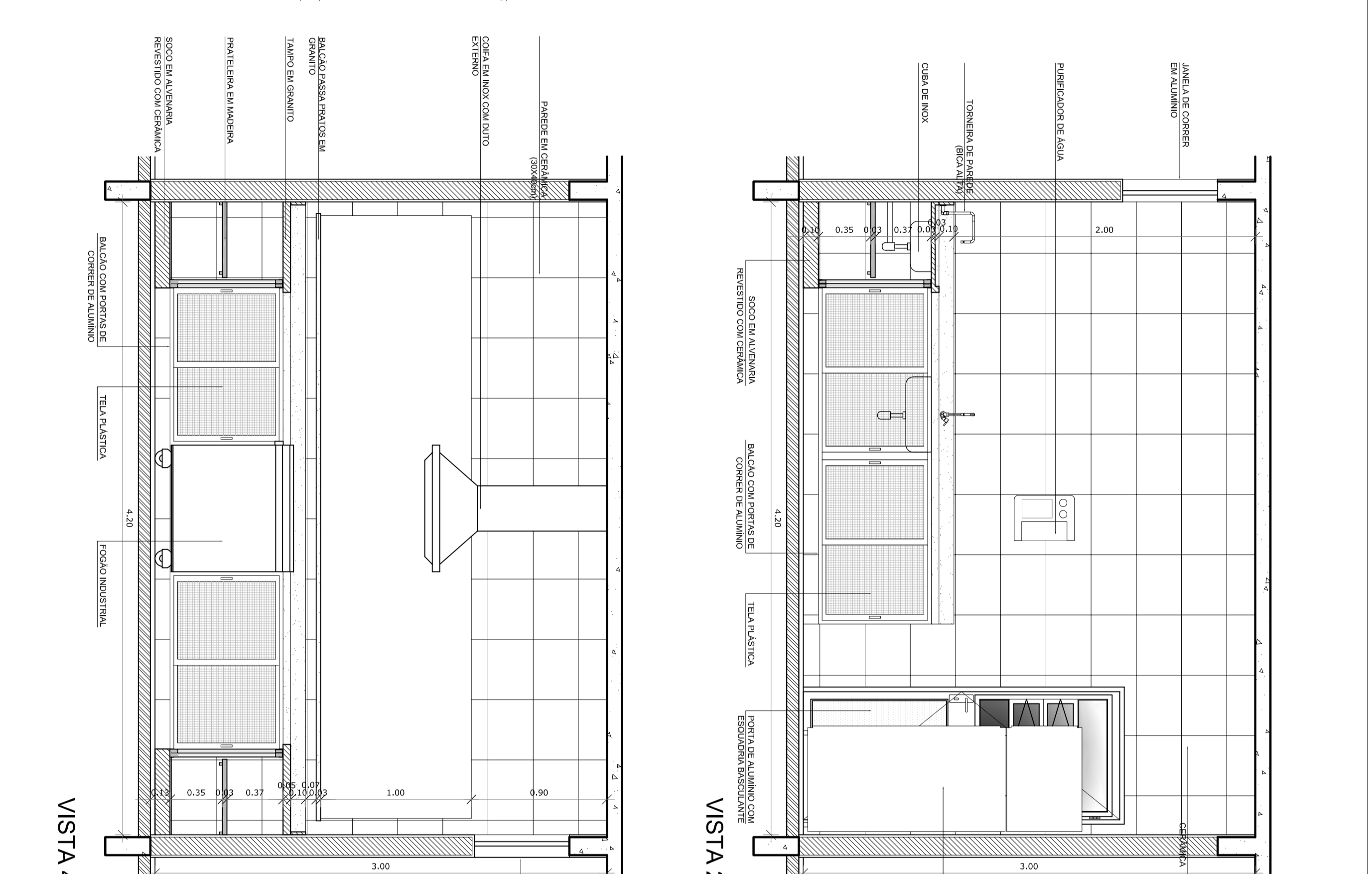
VISTA 5



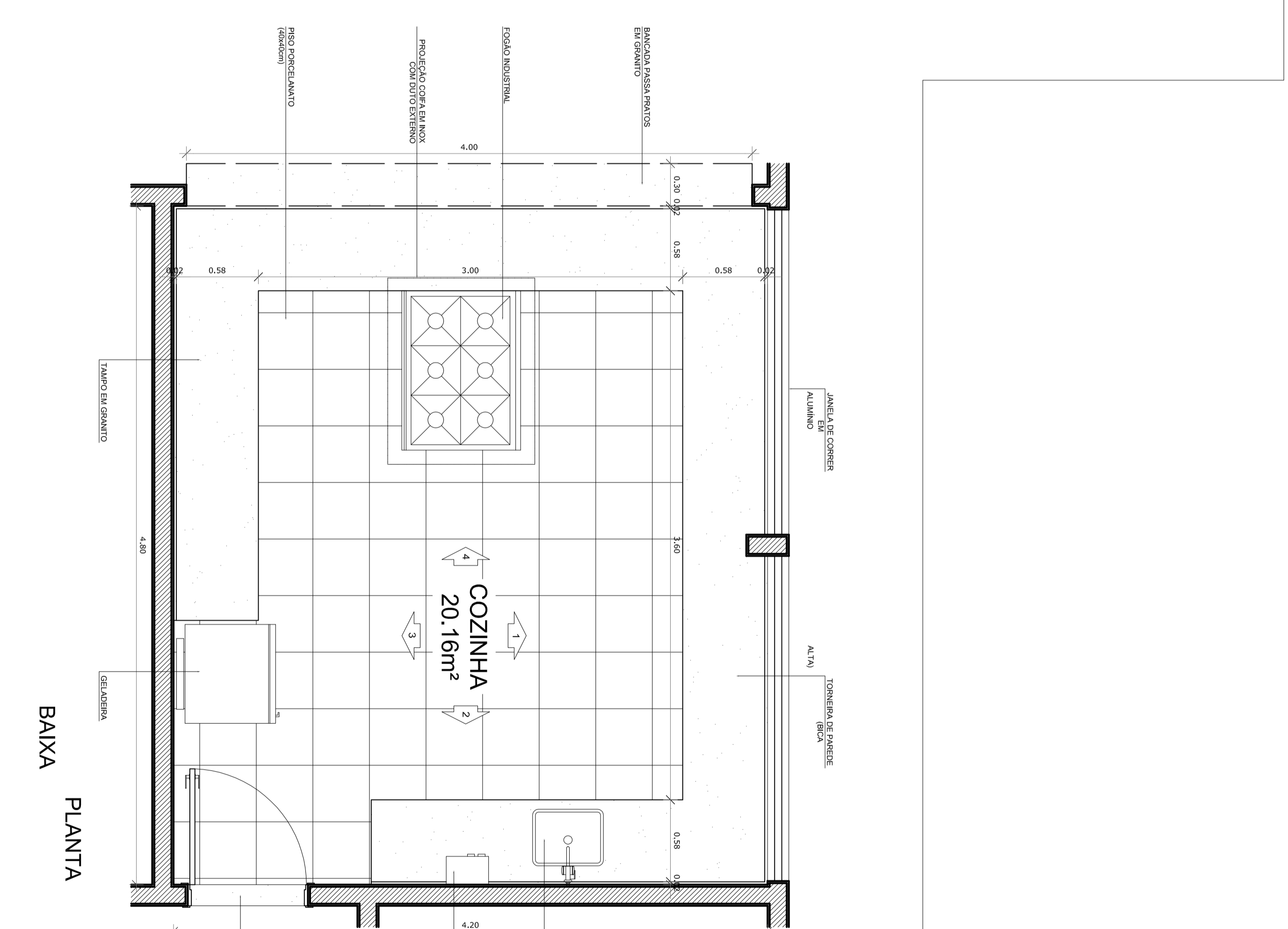
BAIXA PLANTA



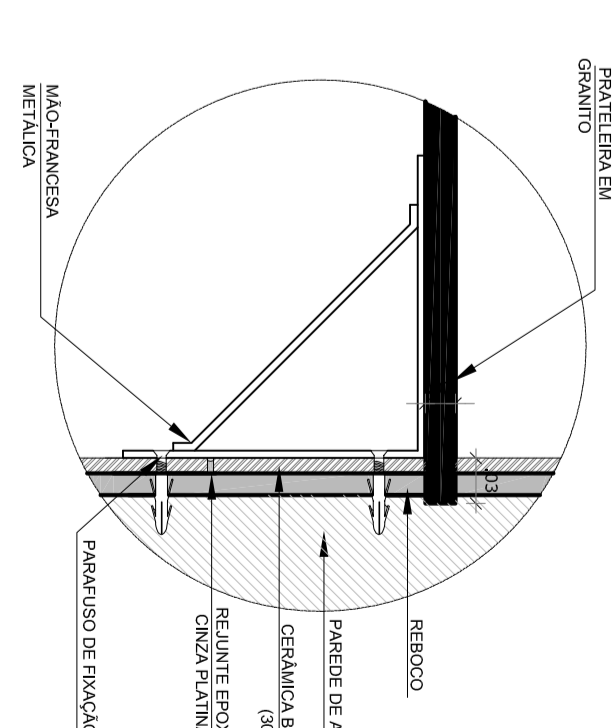
VISTA 1



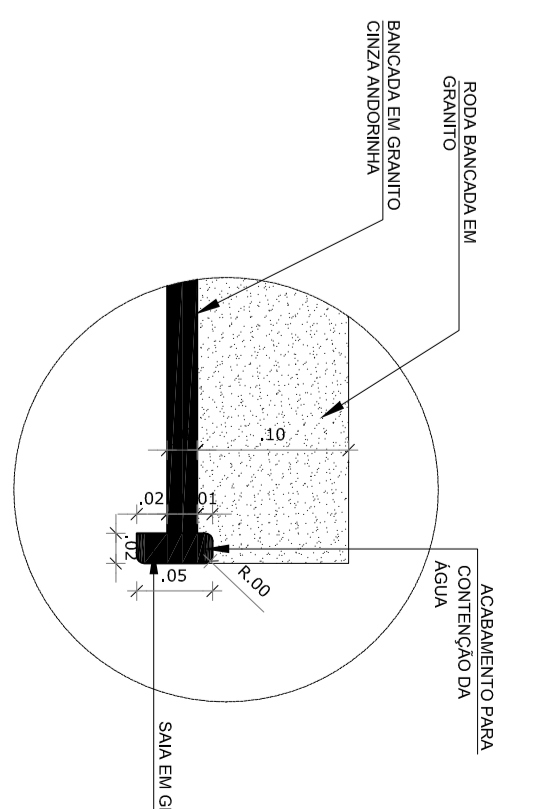
VISTA 2



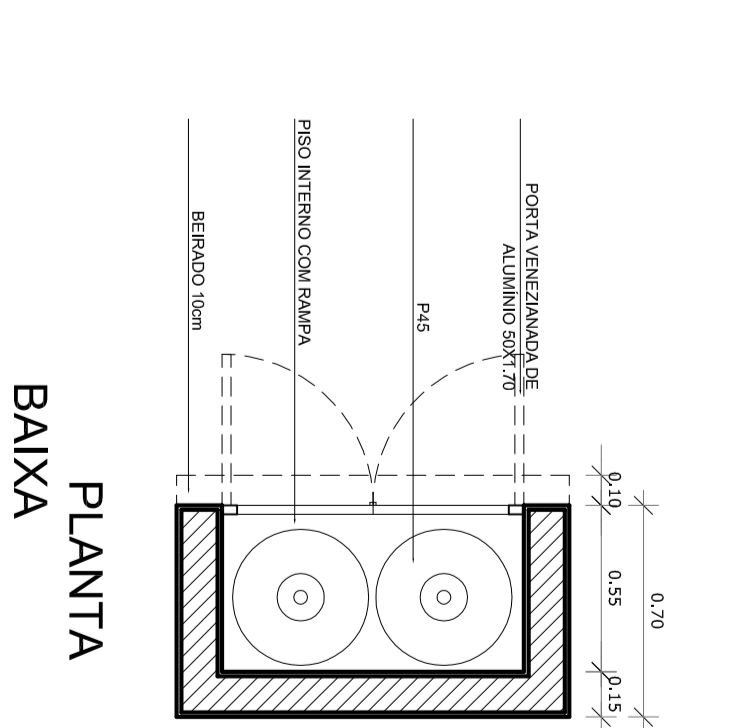
BAIXA PLANTA



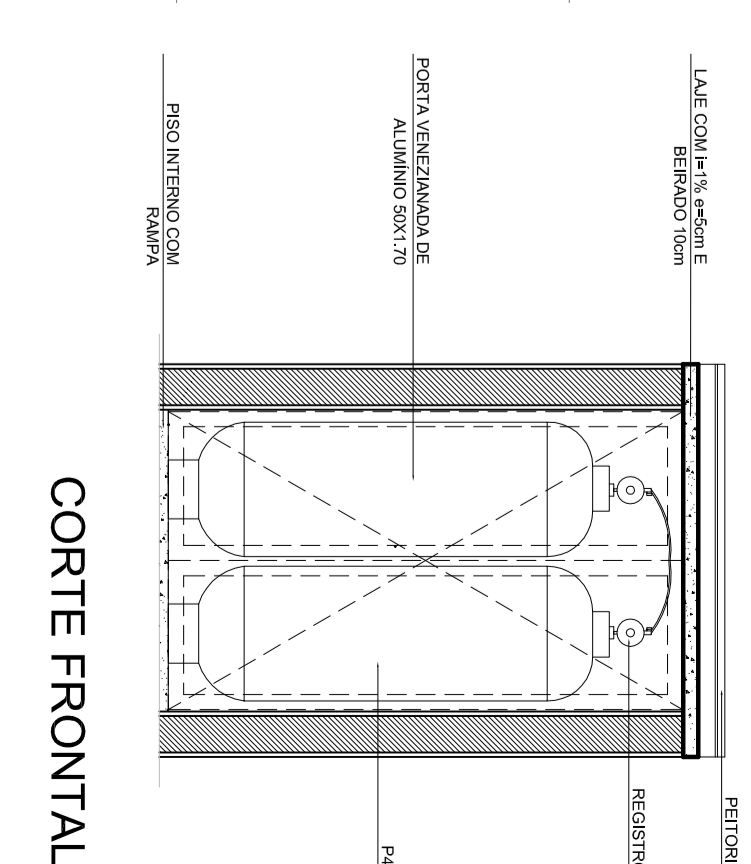
DETALHE PRATEIERA DE GRANITO ESC.: 1/5



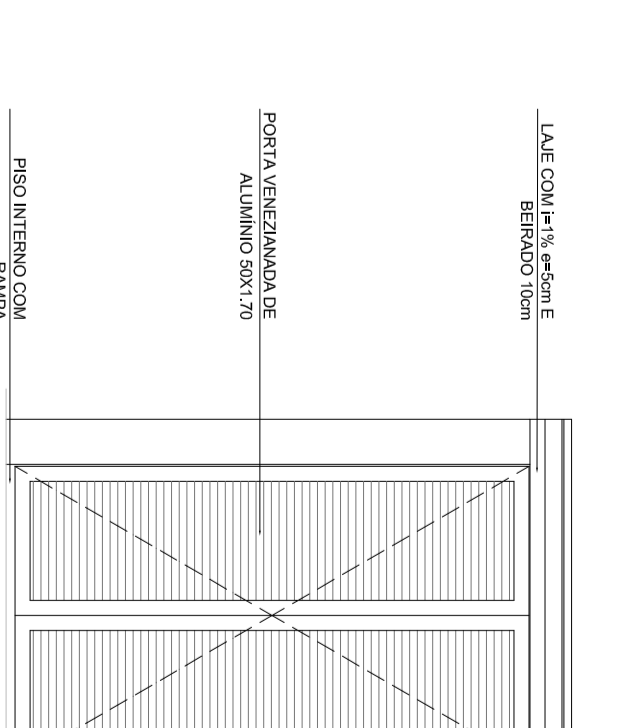
DETALHE BANCADA DE GRANITO - AREA MOLHADA ESC.: 1/5



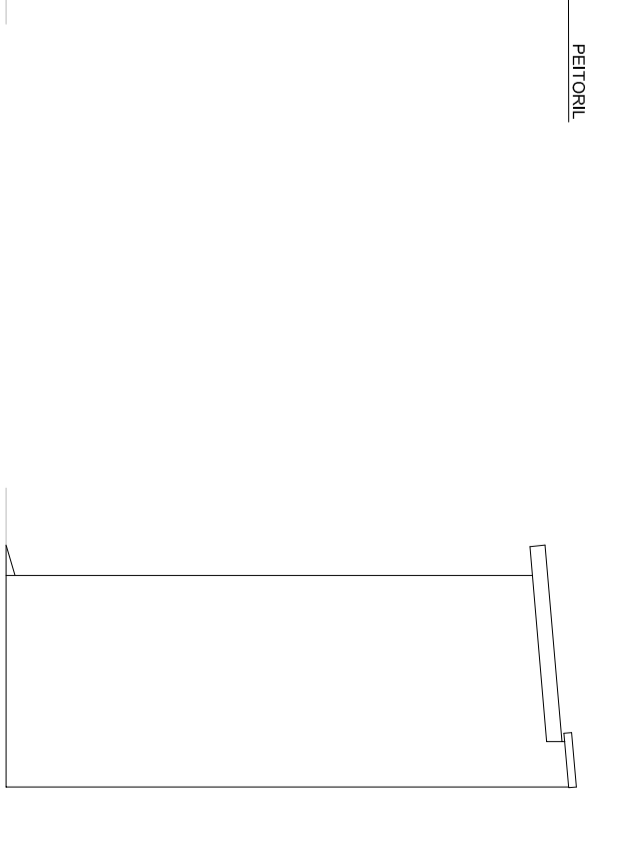
PLANTA BAIXA



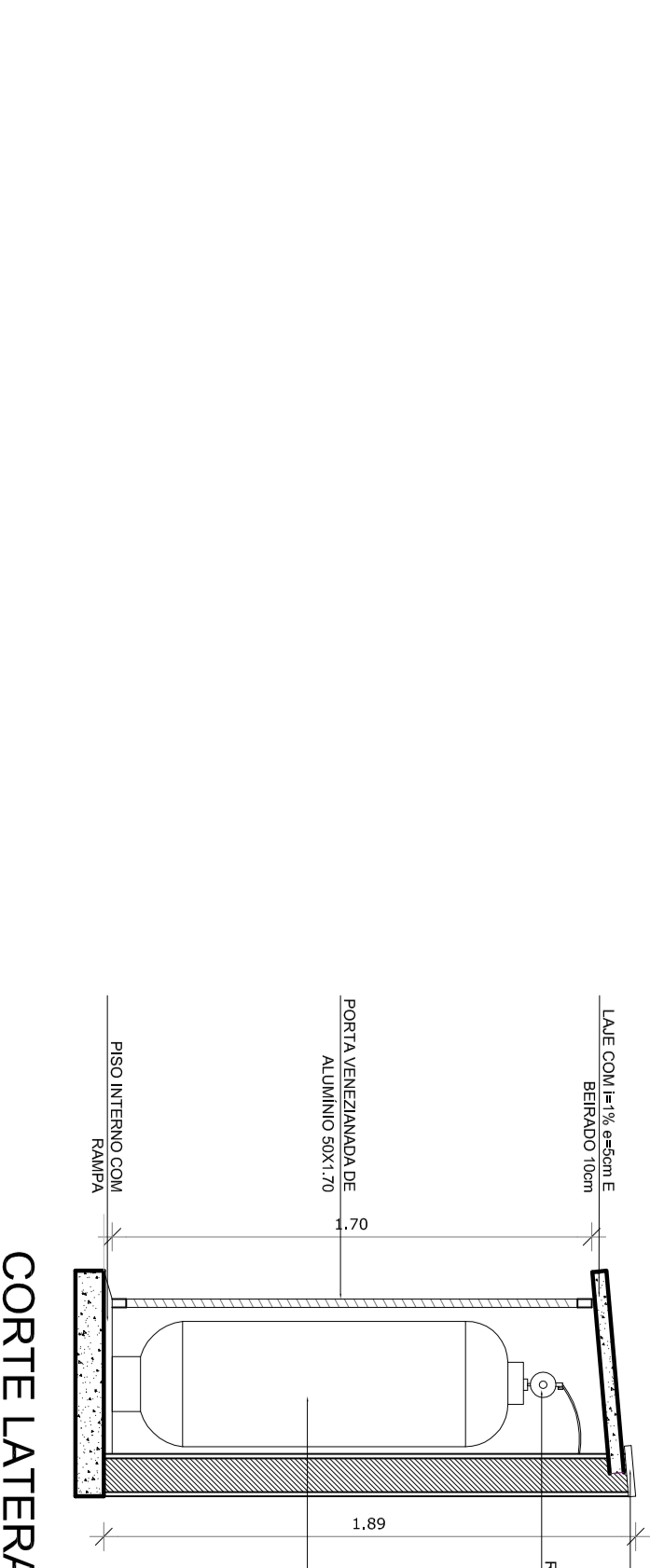
CORTE FRONTAL



VISTA FRONTAL



VISTA LATERAL



CORTE LATERAL

REVISÃO	DATA	RESPONSÁVEL	OBSERVAÇÃO

SECRETARIA MUNICIPAL DA EDUCAÇÃO

**EMEI IVANIR DIAS**

PREFEITURA MUNICIPAL DE PELOTAS  
DEPARTAMENTO DE PLANEJAMENTO E ENGENHARIA

Projeto Arquitetônico: Angelo C. Rosenhecker  
CAU - A314145  
Coordenador do Projeto: Angelo C. Rosenhecker  
CAU - A314145

PROJETO ARQUITETÔNICO  
FRANCK  
ENGENHEIRO: R. Manoel Lucas de Lima, 215  
CONTÊNTOS: Detalhe - Despensa, Cozinha, Casa de gás  
LOCAL: EDUVA - Pelotas, outubro de 2014

PA-10 ESCALA: 1/25